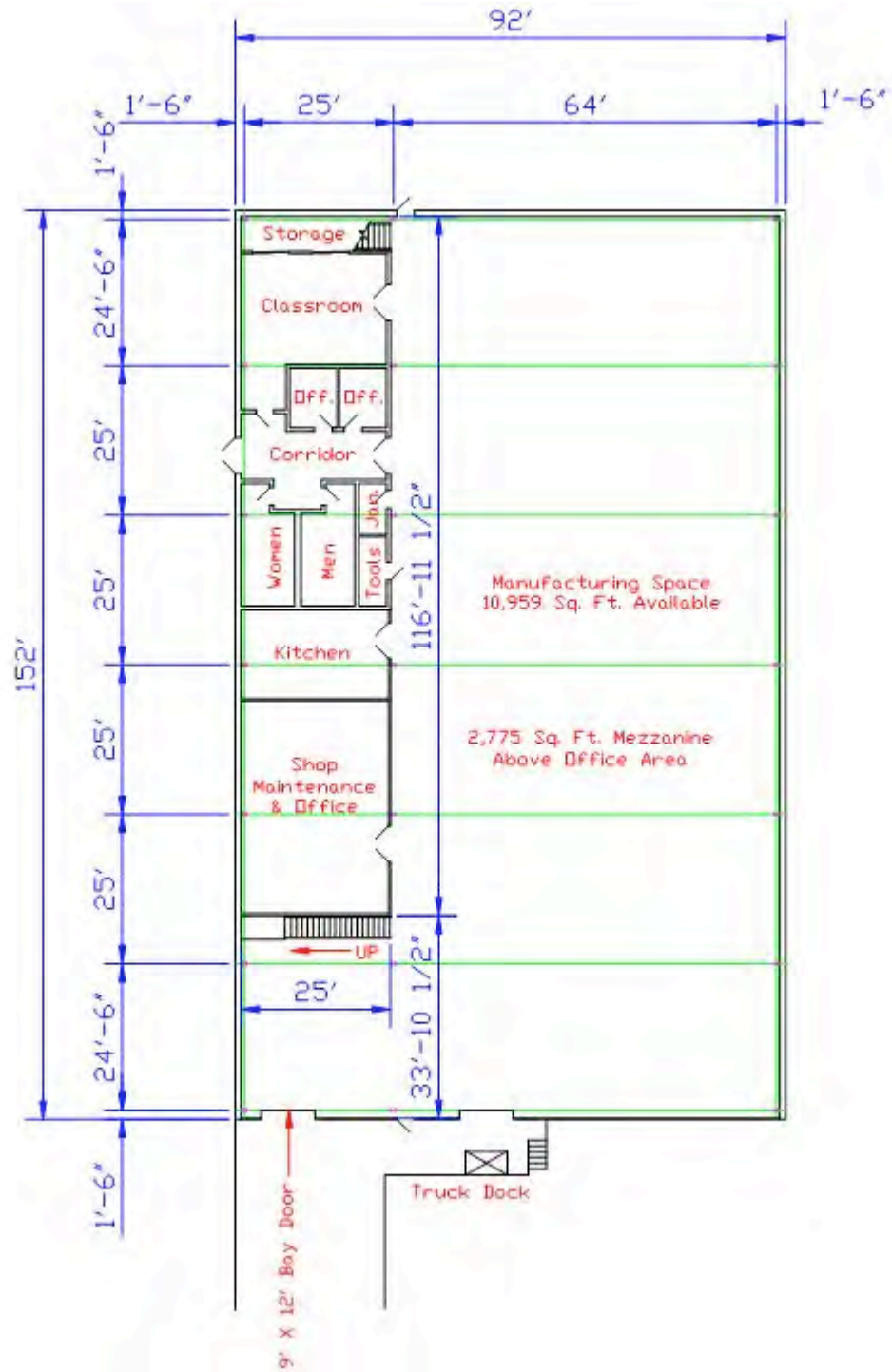


**USDA Forest Service  
Wood Education & Resource Center  
Shop Facility  
301 Hardwood Lane  
Princeton, WV 24740**

---





## Location

<b>City :</b>	Princeton
<b>County :</b>	Mercer
<b>Miles To Nearest Interstate Or 4 Lane Highway:</b>	0.7
<b>Miles To Nearest Commercial Airport:</b>	12.0
<b>Rail Access :</b>	None
<b>Navigable Waterways:</b>	None

## Size and Utilities

<b>Total Sq. Ft. :</b>		16,759
<b>Avail Sq. Ft. :</b>	<b>Approximately:</b>	<b>10,000</b>
<b>Avail Acreage :</b>		0.0
<b>Electric :</b>	Appalachian Power	
<b>Water :</b>	Town of Athens	
<b>Gas :</b>	Mountaineer Gas	
<b>Sewer :</b>	Oakdale Road Public Service District	

## Contact Information

<b>Name :</b>	Steve Milauskas Director
<b>Address :</b>	USDA Forest Service Wood Education & Resource Center 301 Hardwood Lane Princeton, WV 24740
<b>Phone :</b>	(304) 487-1510
<b>Fax :</b>	(304) 487-6661
<b>Email :</b>	smilauskas@fs.fed.us